



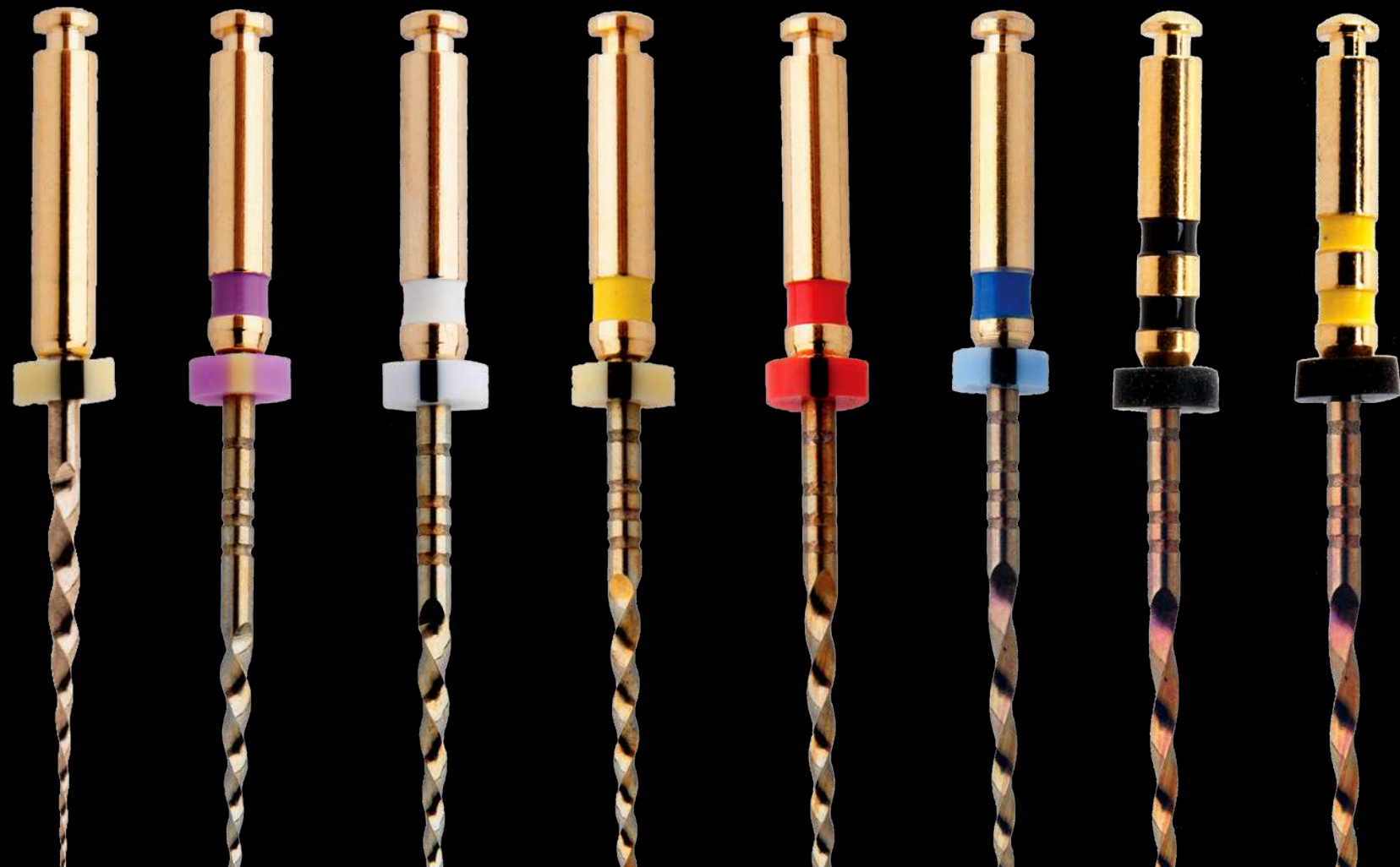
Our mission is to deliver endodontic products and solutions, at a more affordable price which in turn benefits practitioners and patients everywhere.



EDGETAPER
PLATINUM™

About EdgeEndo

EdgeEndo was founded in 2012 by US based Endodontist, Dr. Charles Goodis. Conducting business in **30+ countries** around the world, EdgeEndo's mission is to deliver high quality dental products and solutions, at affordable prices which in turn benefits practitioners and patients everywhere. Innovation is the heart of EdgeEndo, we believe **premium technology shouldn't have to come with a premium price tag.**



“

Let Us Help You
Do Great Root
Canals.

”

– Charles J. Goodis,
DDS, Endodontist, Albuquerque,
NM, USA, Founder & Owner,
EdgeEndo®





Clinical Results & Clinical Cases

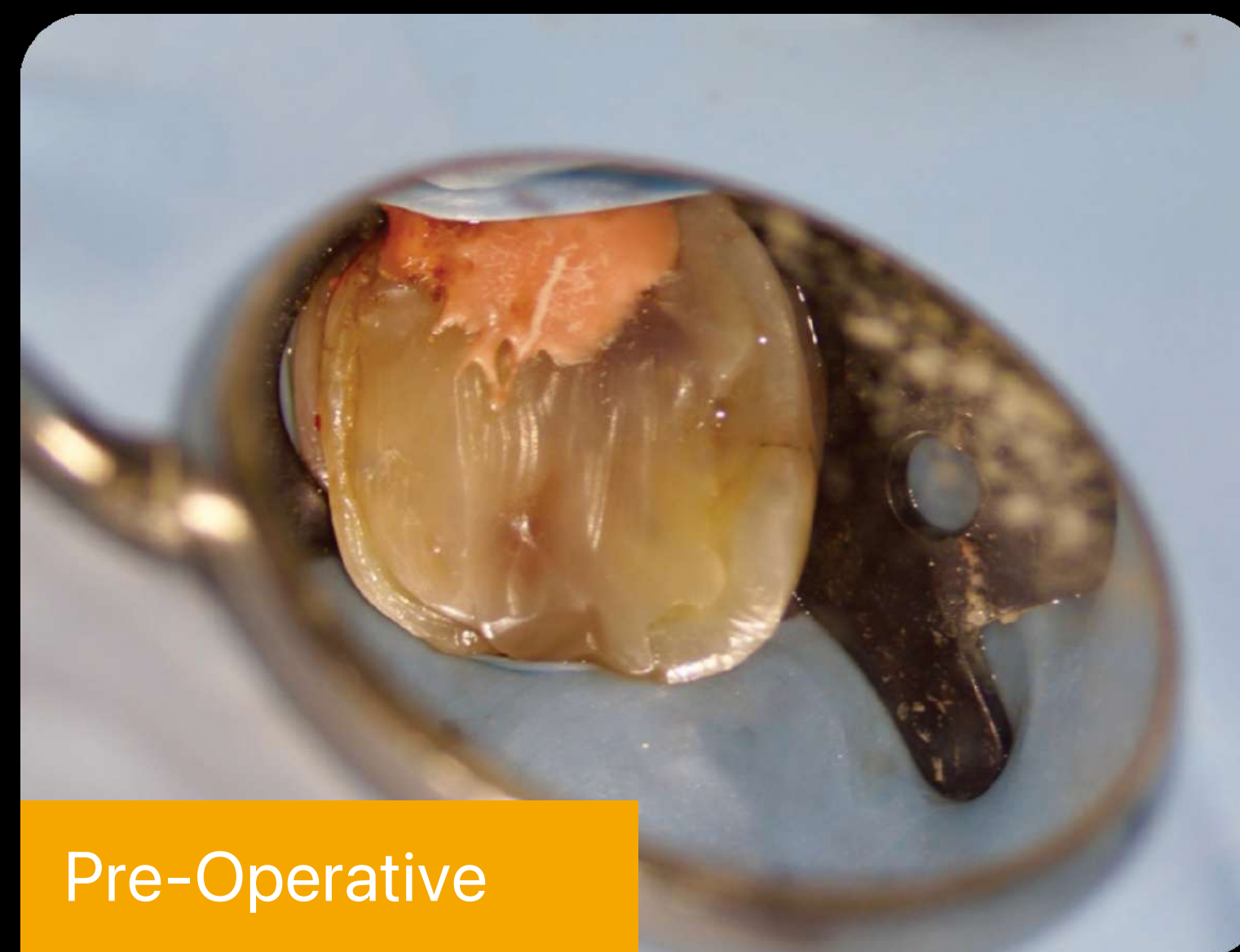
Clinical Case



Jean-Charles Cambresier, Jean-Charles Cambresier Endodontist & Expert Dentist, Gembloux, Belgium

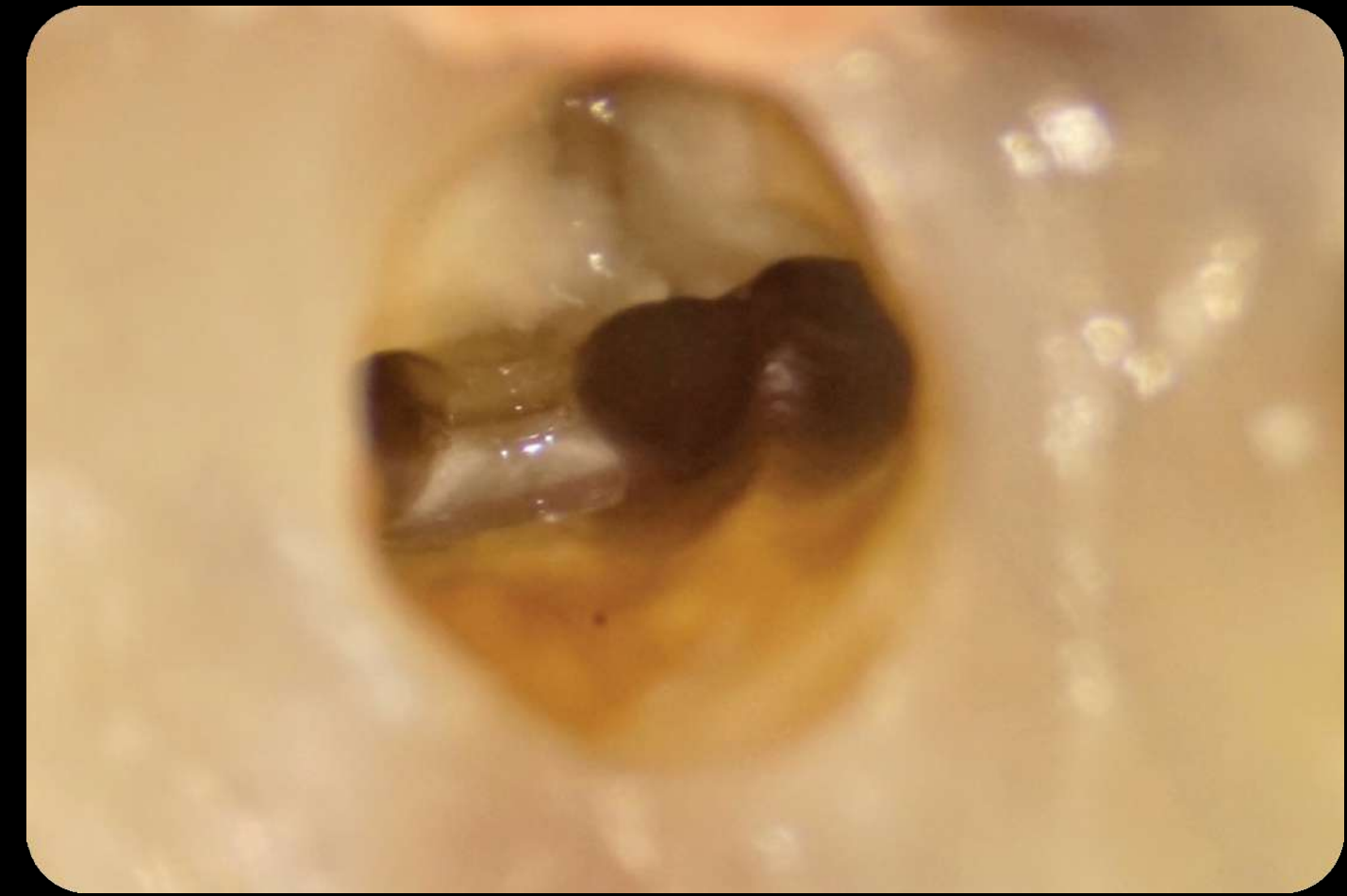
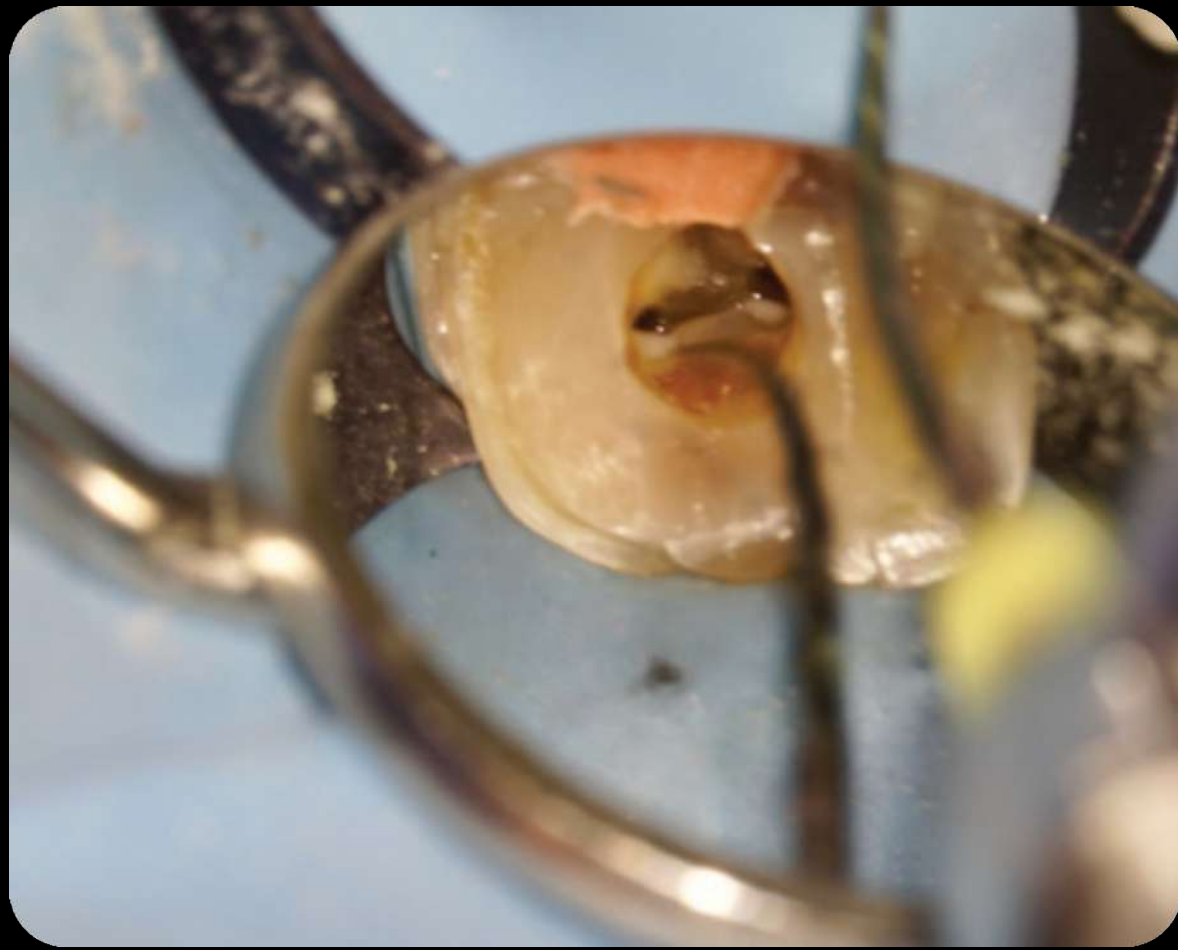


First lower, left molar showing a decay on the distal part with the symptom of irreversible pulpitis. Firstly, the decay is removed, and the tooth is built again with a temporary filling. Then the rubber dam is placed, and the access cavity is done.



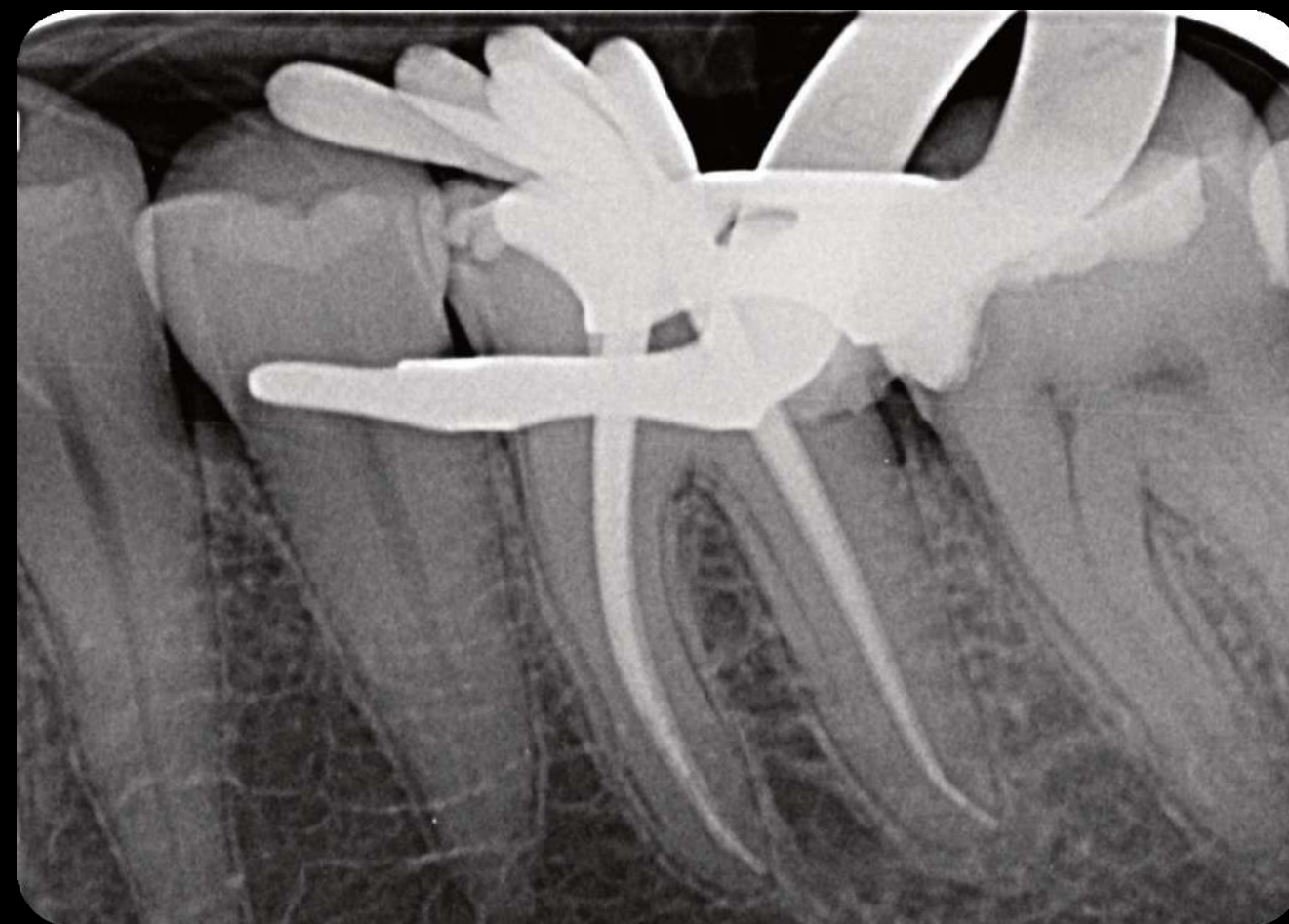
Pre-Operative

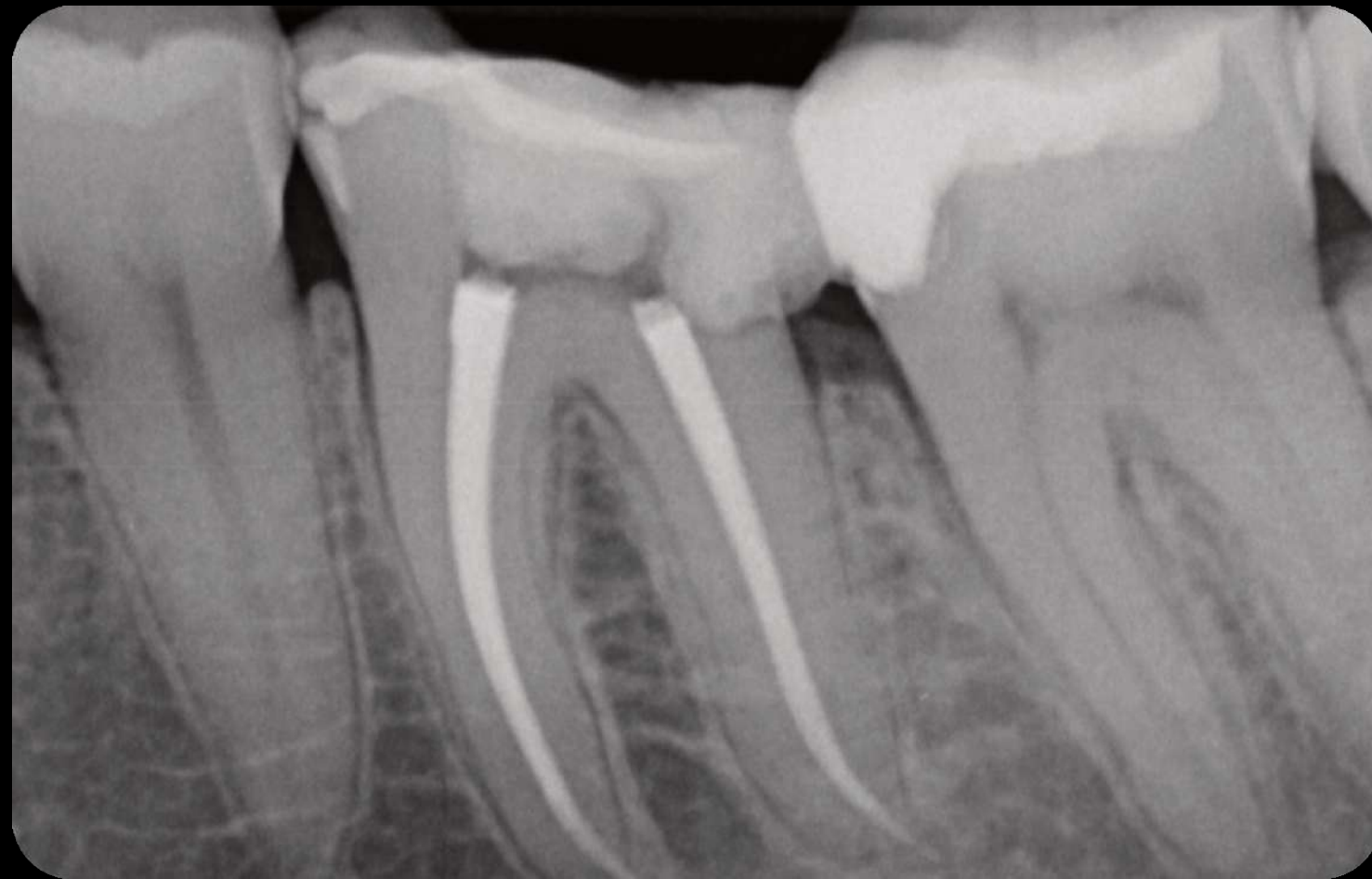
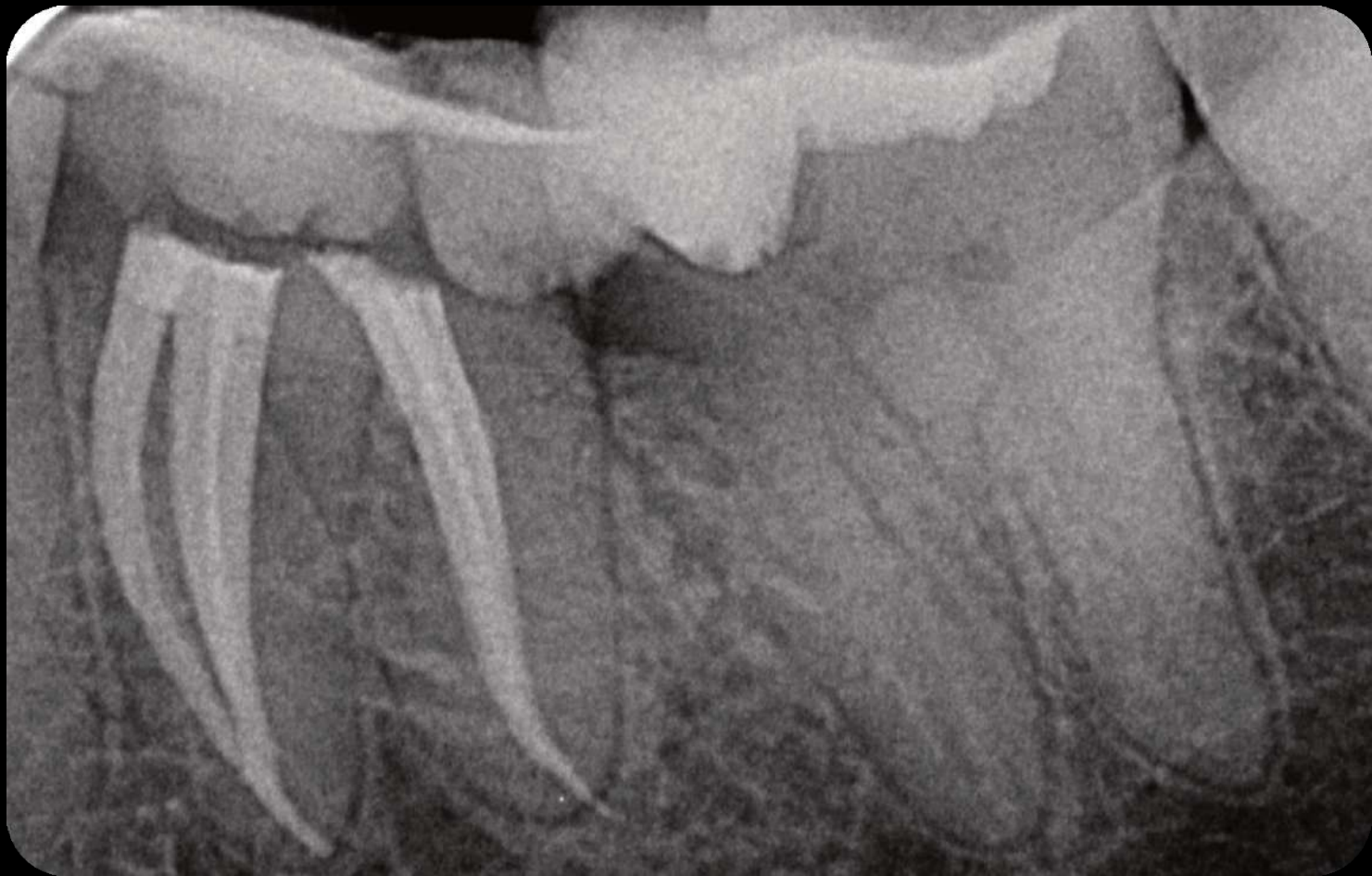
The four canals were opened using the SX EdgeTaper Platinum. The coronal part was also widened using the S1 EdgeTaper Platinum. Working length and patency are obtained with a #10 K-file. A #15 K-file was used to confirm length and patency. Thanks to the technology of EdgeEndo, I was able to prebend the file for comfortable shaping even if the opening was reduced. S1, S2, F1 and F2 EdgeEndo Platinum were brought to the full length of the canal.



▲ During the cleaning of the isthmus between the mesial canals, an extra canal showed up. The shaping phase was fast and efficient using SX to the F2.

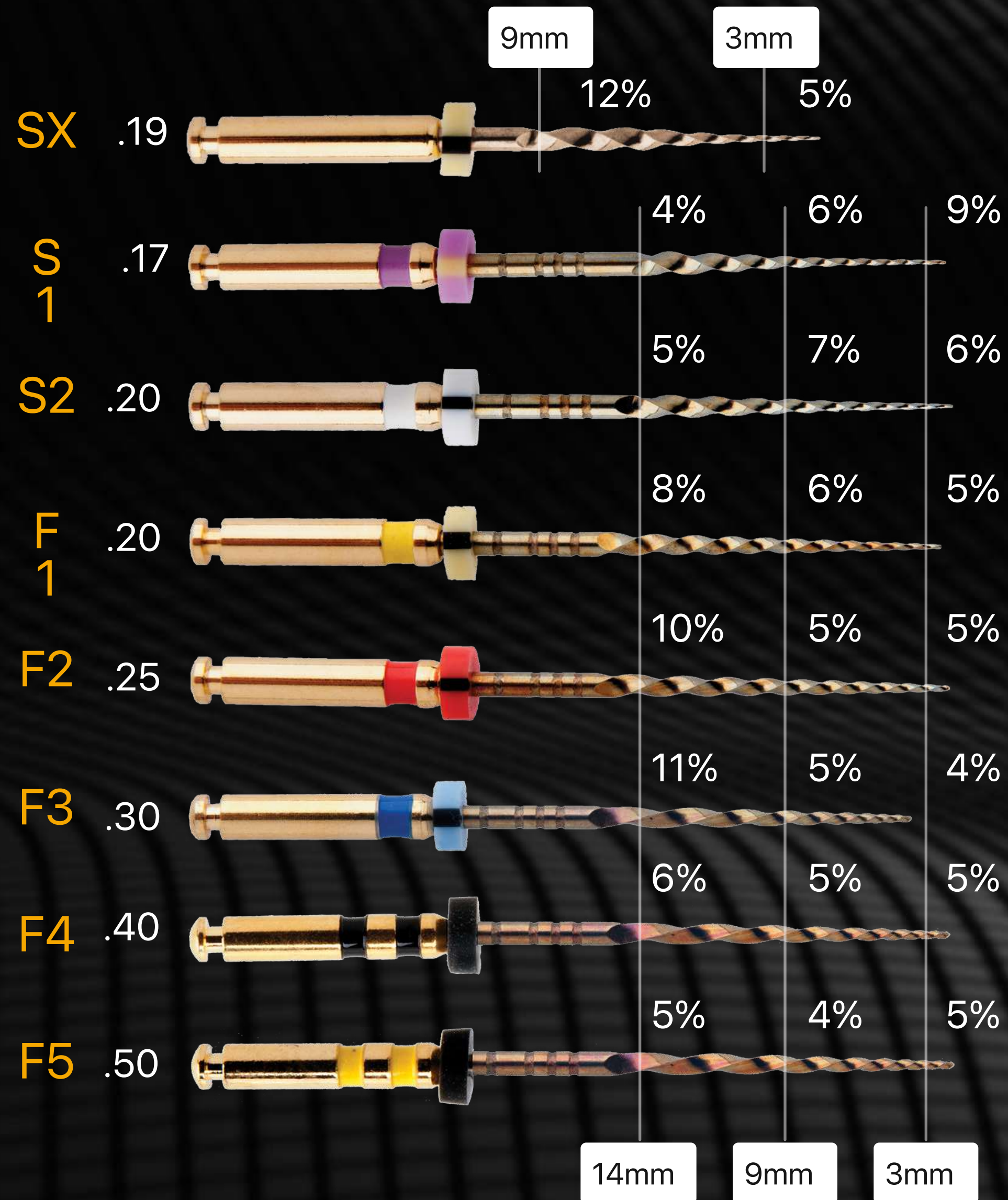
▼ The cone fit Xray showed great length and a common exit for two of the three mesial canals.





The root filling was done with a single cone technique using the BUSA EndoSequence Bioceramic Sealer. The post op X-Ray shows great density and length of the root filling.

EDGE TAPER PLATINUM™



The EdgeTaper Platinum™ is designed to be compatible with most handpieces and operates at the ProTaper® and ProTaper Gold® parameters. This familiar sequence will ensure the switch to EdgeTaper Platinum™ will be seamless.

EdgeTaper Platinum™ features our Heat-Treated Firewire™ NiTi making it strong and more flexible with 90° curves. EdgeTaper Platinum™ tests at twice the cyclic fatigue as ProTaper Gold® and 6 times the cyclic fatigue as ProTaper®.

Both file systems have a bloated triangular cross section with a progressive changing taper. Available in lengths 21mm, 25mm, 31mm with six of the same size file in each pack. Experience the new standard in file safety and canal centering ability.

The Taper Has Been **Edge**-ified



Unmatched Flexibility - Heat-treated FireWire™ NiTi gives amazing flexibility, capable of 90° curves.



No Bounce Back - FireWire™ NiTi doesn't bounce back to preserve apical anatomy



Incredible Strength - Twice the cyclic fatigue as Protaper Gold® and six times that of ProTaper®

EDGETAPER
PLATINUM™

Features



We believe premium technology shouldn't have to come with a premium price tag.

Performance

Price

Technology

